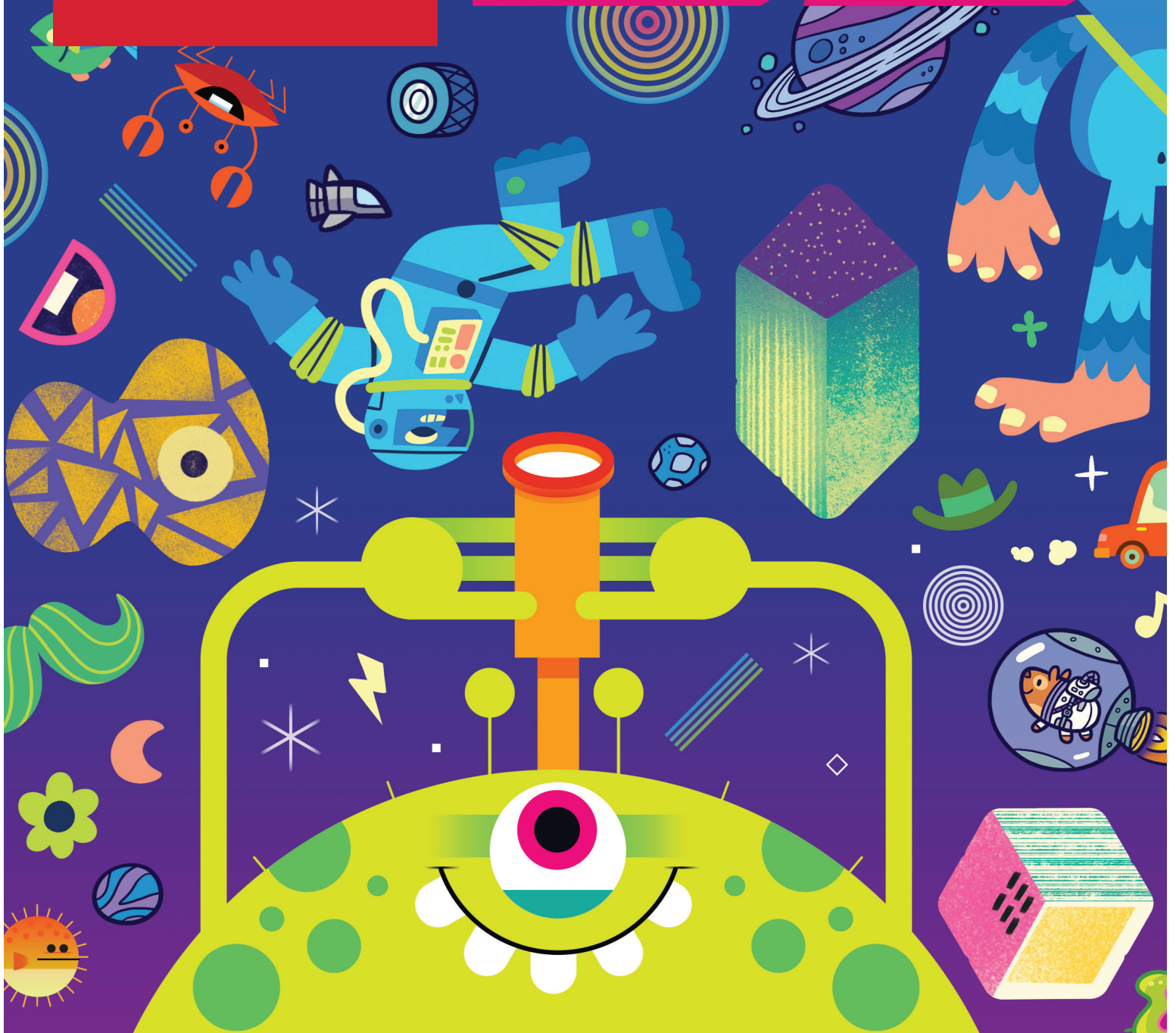




kids'
meal

GOGO ART



ACTIVITIES FOR HOME



CRAFT SAFETY: Adult supervision is required for any arts & crafts project. Observe children closely and intervene as needed to prevent potential safety problems and ensure appropriate use of materials. Some craft items are potential choking hazards for young children. Avoid use of small parts with children ages 3 or younger. Read all manufacturers' warnings before using arts & crafts supplies.



**kids'
meal**



KNOCK OUT SPONGE PAINTING

WHAT YOU'LL NEED:

- Safety scissors
- Sponge brush or paint brush
- Tape
- Non-toxic paint
- Construction paper
- Paper plate
- Pencil



CAUTION: The cutting edges of scissors are sharp, and care should be taken whenever cutting or handling.





1. Draw several star shapes on any construction paper scraps.



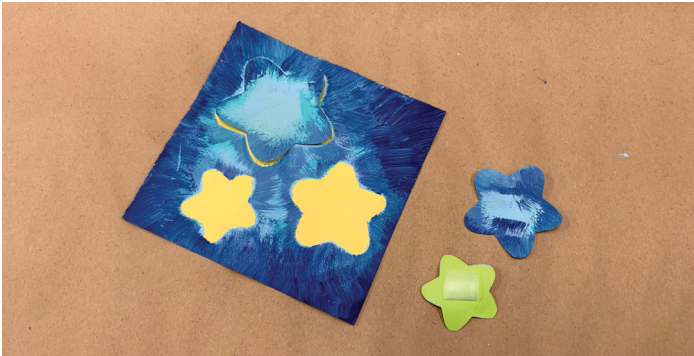
2. Cut out the shapes with safety scissors.



3. Tape the shapes to an approx. 6 x 6 inch piece of construction paper.



4. Paint all over the square construction paper, and let the paint dry.



5. Peel off the taped-on shapes to reveal the unpainted area.



**kids'
meal**



STAINED GLASS SHAPES

WHAT YOU'LL NEED:

- Safety scissors
- Construction paper
- Non-toxic craft glue
- Vellum paper
- Sponge brush or paint brush
- Pencil
- Non-toxic glue
- Tissue paper (multiple colors)



CAUTION: The cutting edges of scissors are sharp, and care should be taken whenever cutting or handling.





1. Tear different colors of tissue paper into small pieces. They don't need to be perfect!



2. Use craft glue to attach the pieces of tissue paper to a large sheet of vellum paper to create a stained glass effect.



3. Let the craft glue dry.



4. Draw shapes with an open space in the middle and cut them out with scissors.



5. Trace your template on top of a piece of construction paper and cut it out.



6. Glue the cut out shape on top of your vellum paper with the stained glass pattern. Make sure that it has dried sufficiently.



7. Cut around your construction paper shape and leave the stained glass effect in the middle.



8. Repeat the process with different shapes!



**kids'
meal**



WASHI TAPE PAINTING

WHAT YOU'LL NEED:

- Safety scissors
- Washi tapes
- Non-toxic paint
- Sponge brush or paint brush
- Construction paper
- Paper cup
- Non-toxic glue
- Pencil



CAUTION: The cutting edges of scissors are sharp, and care should be taken whenever cutting or handling.





1. Pick a piece of construction paper in the color of your choice.



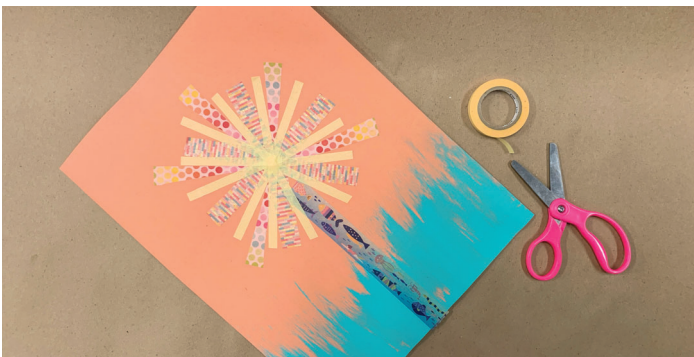
2. Paint the grass on the bottom of the paper.



3. Create a stem with a wider style of washi tape.



4. Pick another washi tape design and create your first layer of petals around the stem.



5. Repeat the process until it looks filled out.



6. Tape multiple designs of washi tape on a new piece of construction paper in the color of your choice.



7. Cut out leaf-like shapes from the section that was covered in washi tape.



8. Trace a circle around a small cup on a new piece of construction paper. Then, cut it out.



9. Cut out another small circle with a different color of construction paper.



10. Glue the circles to the middle of your flowers, and glue the leaves to the stem.